

# REUNION

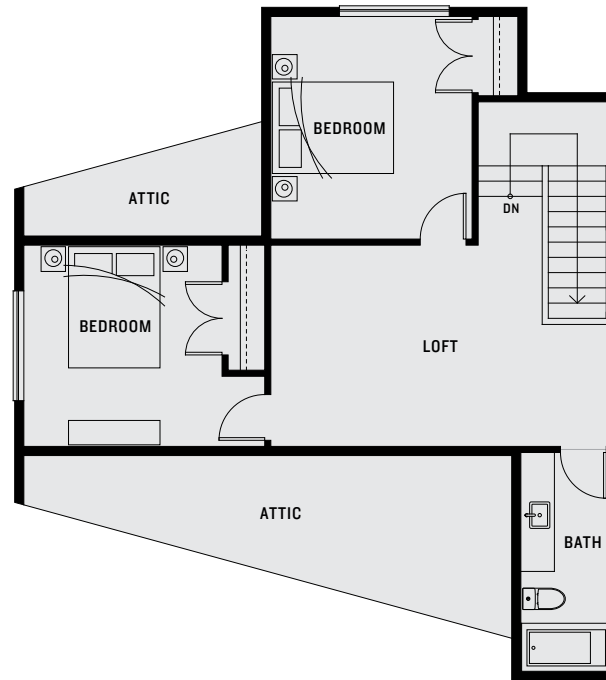
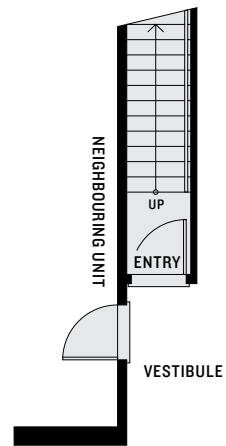
MURRAYVILLE SCHOOLHOUSE

SA

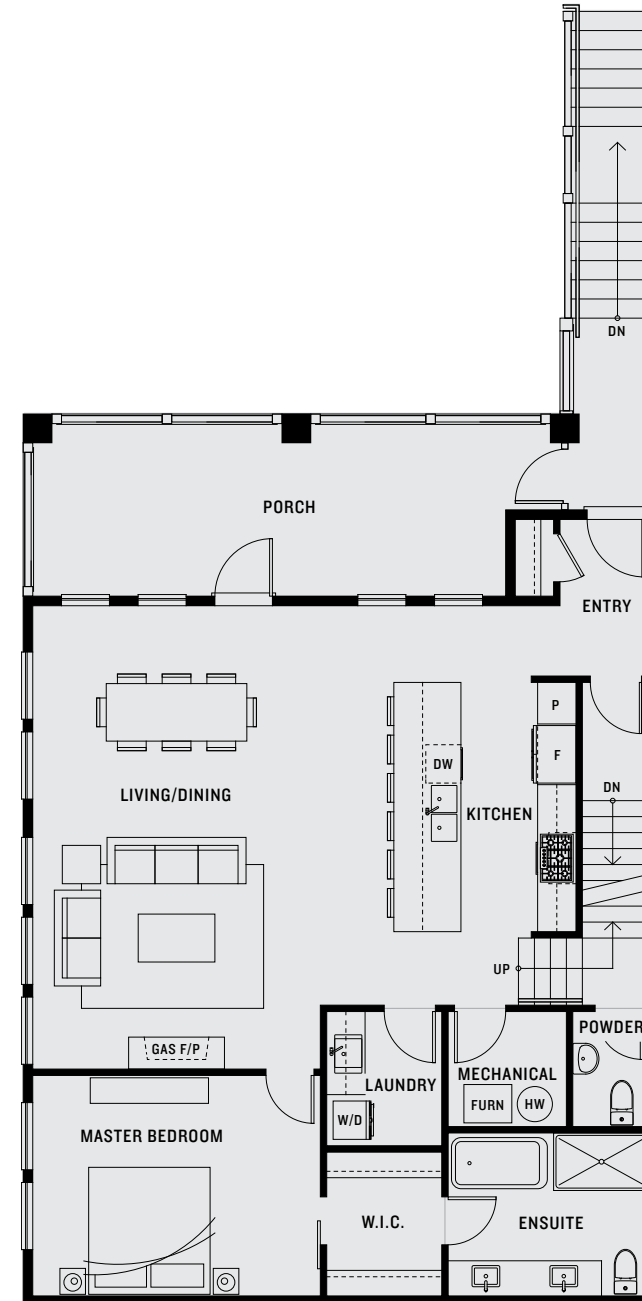
3  
BEDROOM

2.5  
BATHROOM

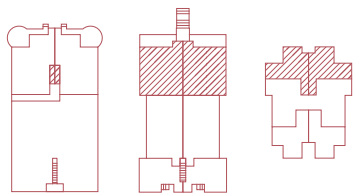
1964  
SQFT



UPPER



MAIN



GARDEN

MAIN

UPPER



The developer reserves the right to make modifications and changes to the building design, elevations, dimensions, specifications, features and prices without prior notification. Decks, patios, stairs and windows may vary based on site conditions. All sizes and dimensions are approximate and based on architectural measurements. Reverse and/or mirror plans occur throughout the development. Please see disclosure statement for specific offering once available. E & O.E.

SCHOOLHOUSE

